

Cookbook to enable the TCP/IP access at TITANUS network cards

November 2018

Activation access to TITANUS network card in Windows

Network card NIC NU-5-D S / N 1264

Default network address with all cards IP 192.168.1.5

Windows 10:

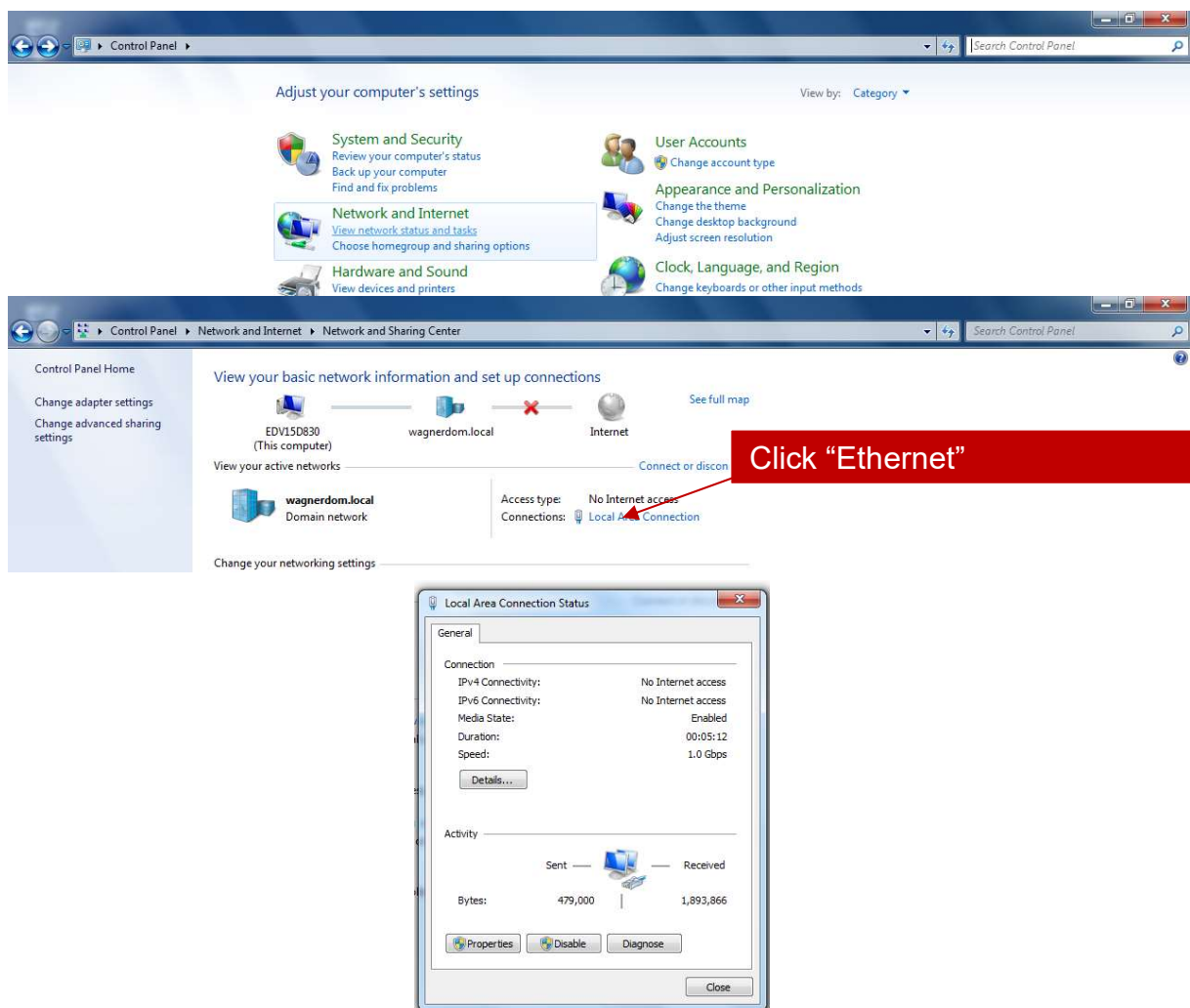
Connect the PC and the network card with network cable

Check Network and Internet in Control Center

Click "View network status and tasks"

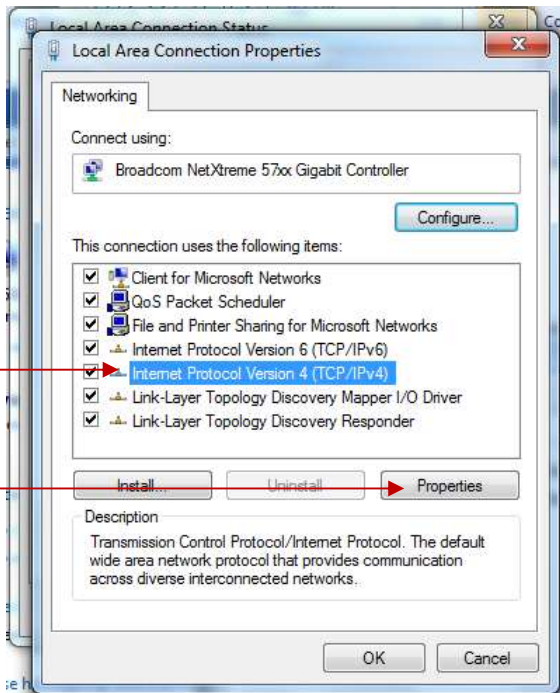
Click "Local Area Connection"

Local Area Connection Status with tab sheet General appears



Click button "Properties"

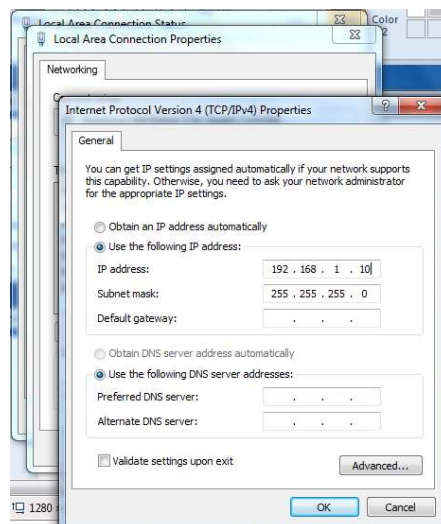
Chose Internet protocol 4 (TCP/IPv4) and click "Properties"



Properties of Internet protocol 4 (TCP/IPv4) appears

Mark "Use the following IP address"

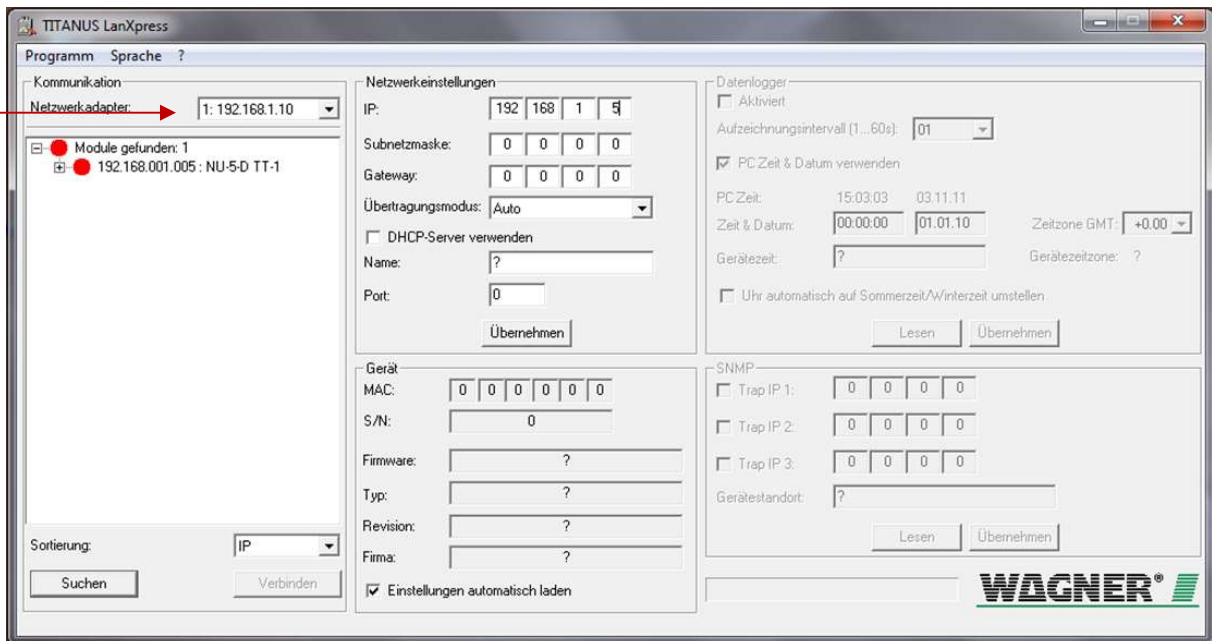
Use the following IP address (for Windows): for example 192.168.1.10 (0-255) except 5, this value is occupied by the TITANUS network card.



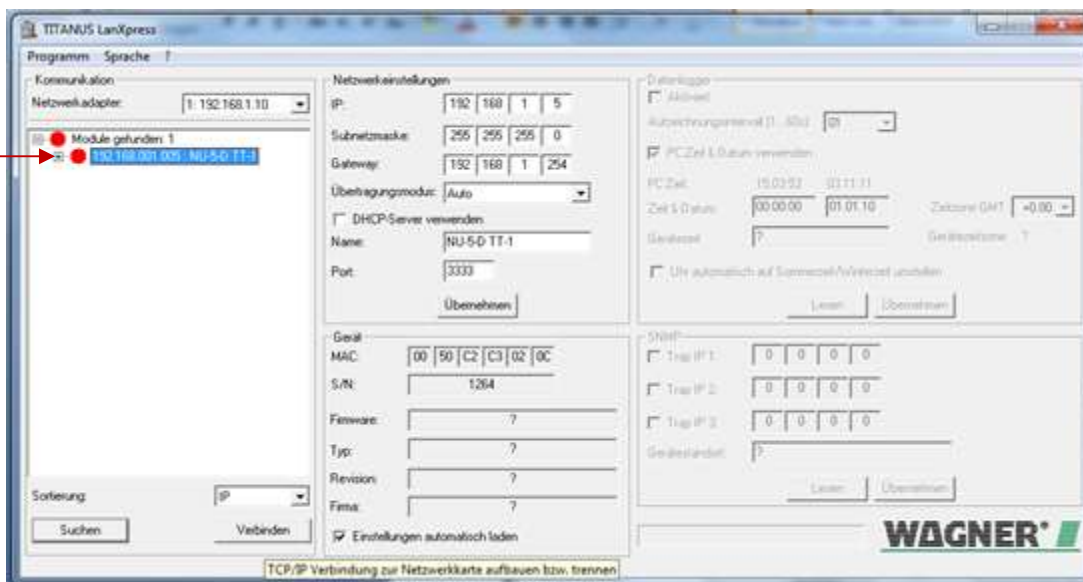
Then click OK – close menu

TITANUS LanXpress:

Start program

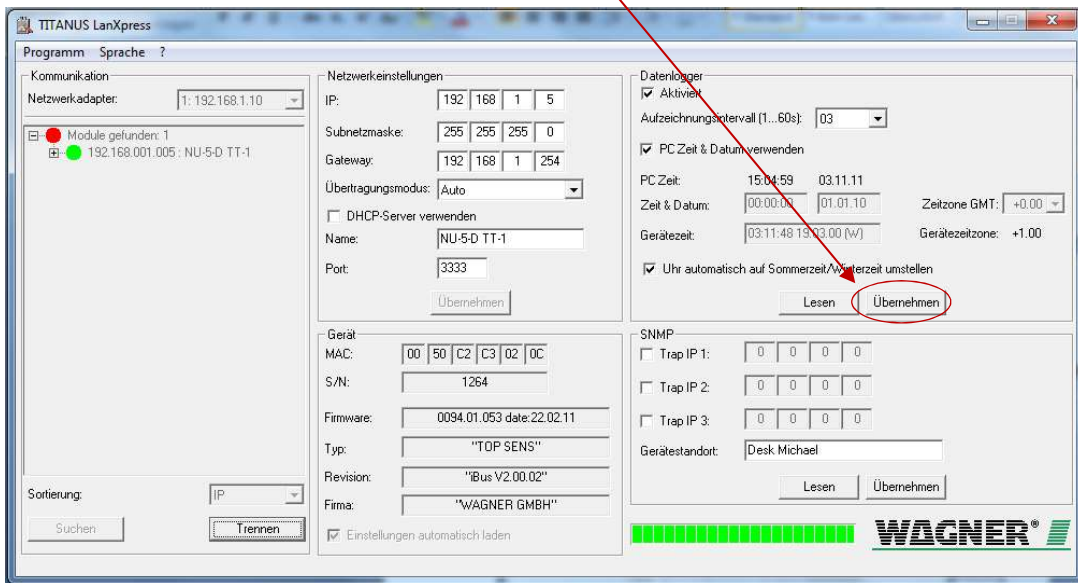


The network adapter has to be found from Windows and selected on the top left side. In our example: 192.168.1.10.



192.168.001.005:NU-5-D TT-1 is found.

Connect and, if necessary, click data logger "Apply" (due to the correct time setting)

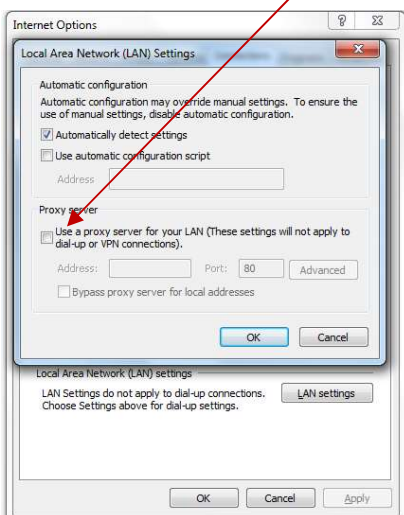


Network settings and device data are displayed.

Network settings can be changed.

Web browser:

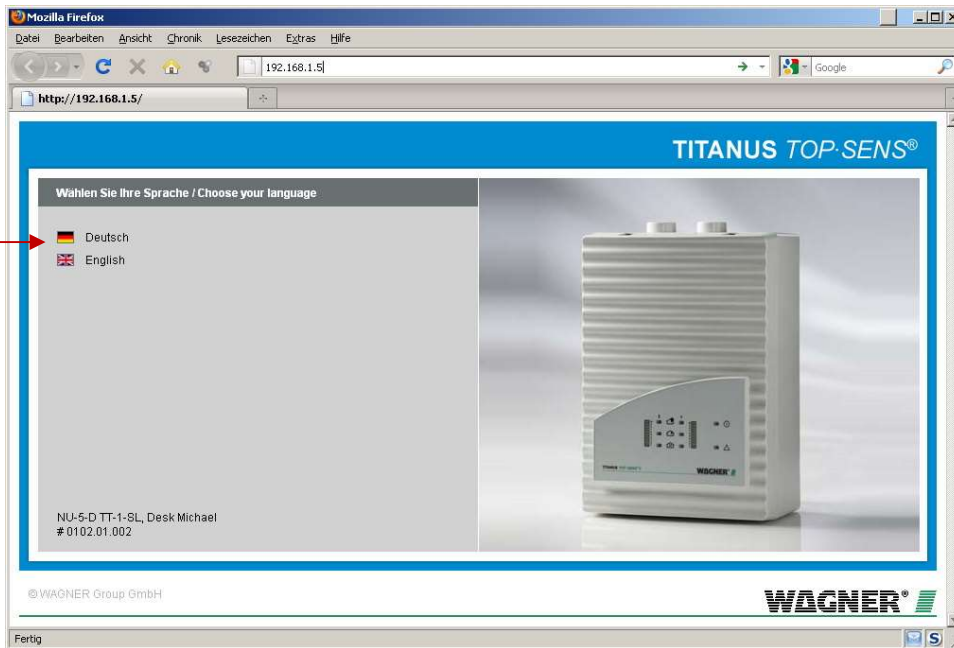
Inside Internet Explorer: choose Tools ⇒ Internet Options ⇒ Connections ⇒ Button LAN Settings ⇒ **Proxy server disabled**



In the web browser address bar enter the address of the NU-5_D: for example 192.168.1.5



The language selection German / English is displayed with name and position of the network card.



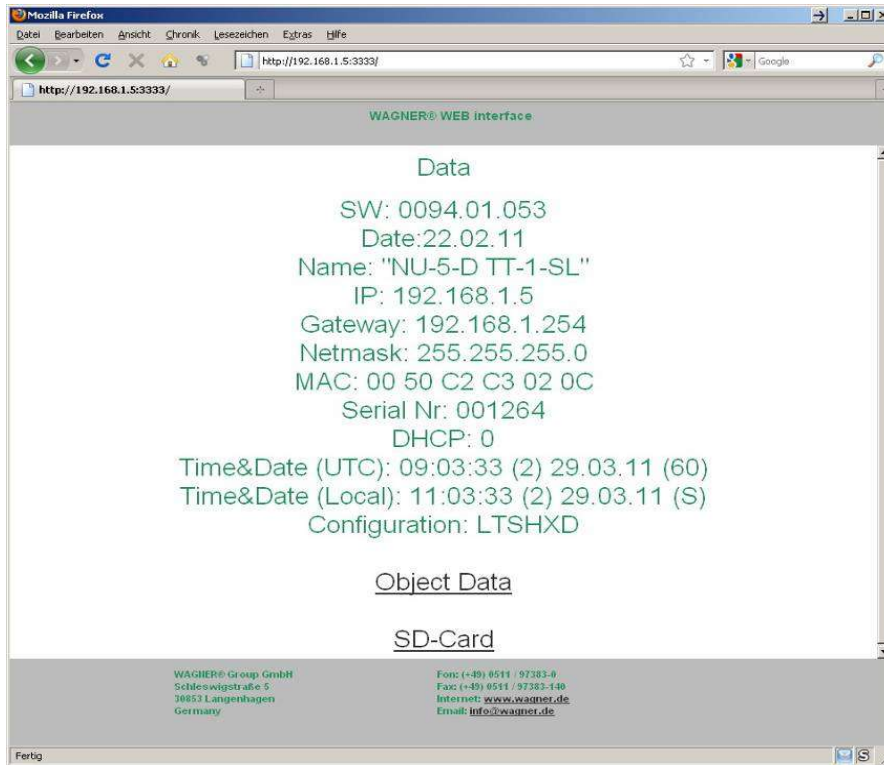
Reception status must flash green

Attention! Scripts must be enabled.

Status, error messages and settings can be retrieved.

Access to the technician page in web browser for reading the log data

For example: 192.168.1.5:3333 (standard port: 3333)



The screenshot shows a Mozilla Firefox browser window with the address bar set to `http://192.168.1.5:3333/`. The page content is titled "WAGNER® WEB interface" and displays the following data:

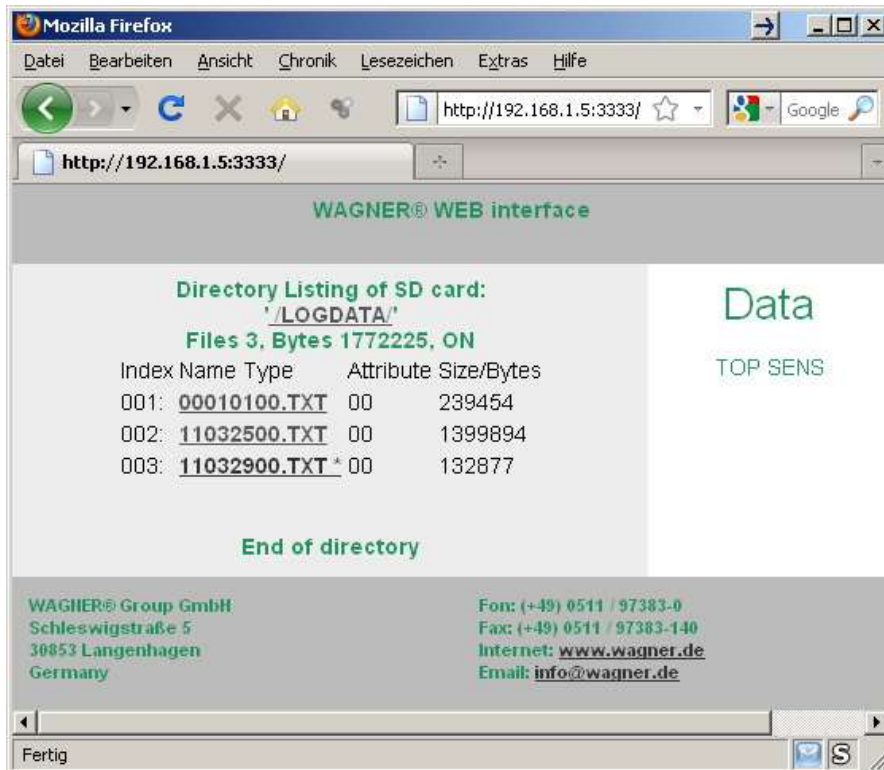
```
Data
SW: 0094.01.053
Date:22.02.11
Name: "NU-5-D TT-1-SL"
IP: 192.168.1.5
Gateway: 192.168.1.254
Netmask: 255.255.255.0
MAC: 00 50 C2 C3 02 0C
Serial Nr: 001264
DHCP: 0
Time&Date (UTC): 09:03:33 (2) 29.03.11 (60)
Time&Date (Local): 11:03:33 (2) 29.03.11 (S)
Configuration: LTSHXD
```

Below the data, there are links for "Object Data" and "SD-Card". At the bottom of the page, contact information for WAGNER® Group GmbH is provided:

WAGNER® Group GmbH
Schleswigstraße 5
30853 Langenhagen
Germany

Fon: (+49) 0511 / 97383-0
Fax: (+49) 0511 / 97383-140
Internet: www.wagner.de
Email: info@wagner.de

Select SD Card



The screenshot shows the same Mozilla Firefox browser window, but the page content has changed to show a "Directory Listing of SD card: '/LOGDATA/'". The listing shows 3 files with the following details:

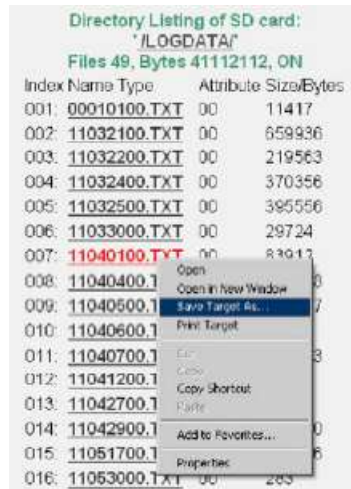
Index	Name	Type	Attribute	Size/Bytes
001:	<u>00010100.TXT</u>	00		239454
002:	<u>11032500.TXT</u>	00		1399894
003:	<u>11032900.TXT</u>	* 00		132877

Below the listing, it says "End of directory". To the right of the listing, there is a "Data" section with the text "TOP SENS". The contact information at the bottom of the page is identical to the previous screenshot.

Select Logdata

Mouse right click on xxx.txt

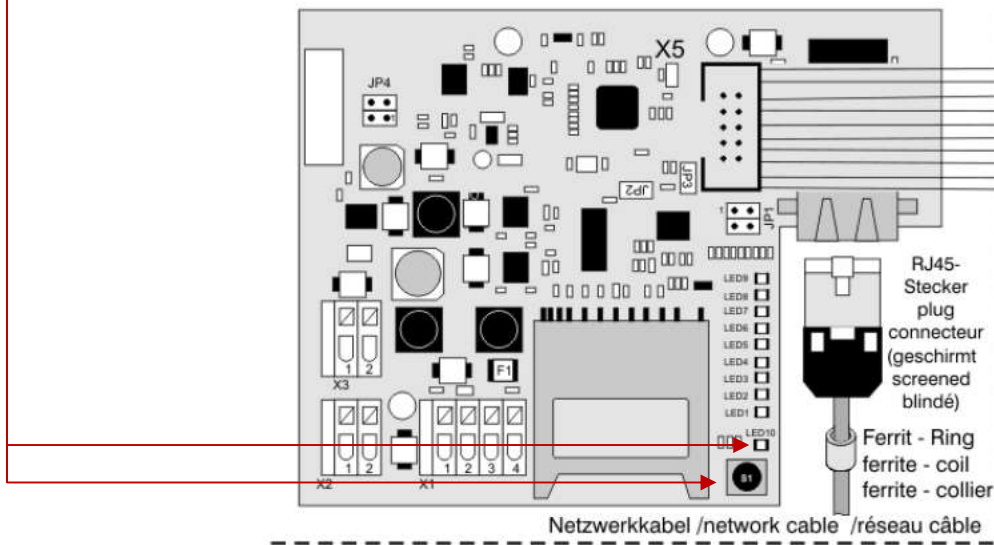
Save target as:



Now check the downloaded data with EventView or DataView.

View the data on the SD card:

Before removing the SD card, push the black button on the network card until LED 10 goes out (at least 3 seconds, directly under the button).



Removing the SD card:

Data from the SD card can be used via card reader on the PC with EventView or DataView.

To put it back in the network card:

Back off the SD-card into the slot, LED 10 below the black button must light again.

To reset the network connections in Windows 7:

Go to Control Center

Network and Internet

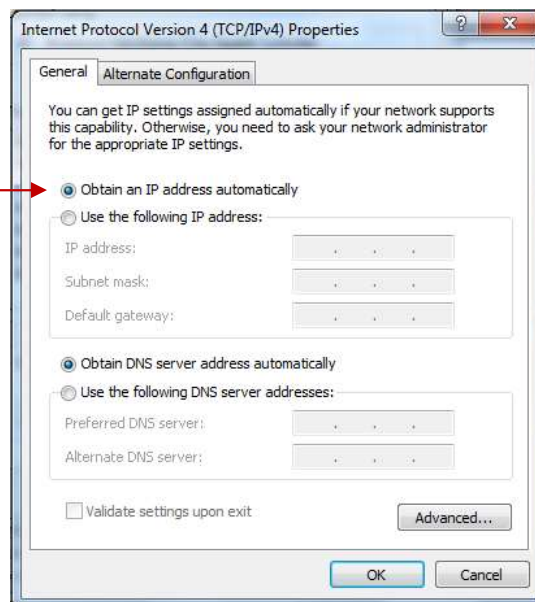
View LAN connections

LAN connection

Tab sheet General appears

Properties

Internet Protocol (TCP / IP)



Properties

Chose IP address obtains automatically.