

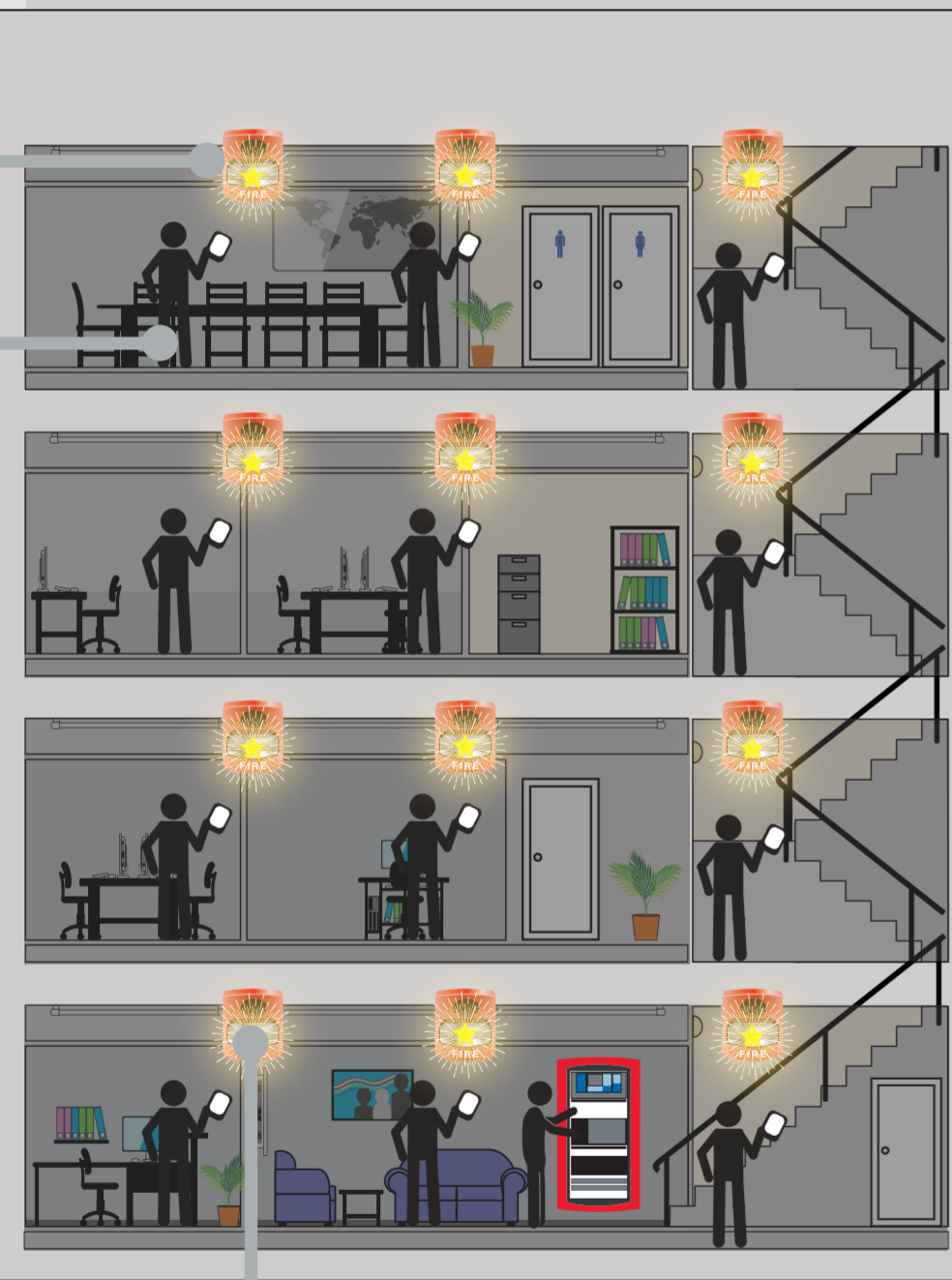
Compare the Difference: Addressable Self-Testing Versus Conventional Testing

Advanced TrueAlert ES appliances bring the benefits of fully addressable technology to fire alarm notification systems. The result? Three new revolutionary self-testing options that can improve safety and simplify your operations—saving time, money and labor in comparison to conventional notification appliance testing.

All appliances on a circuit must be turned on at the same time.

Testing is noisy and disruptive so it's usually done after-hours at increased cost.

CONVENTIONAL TESTING

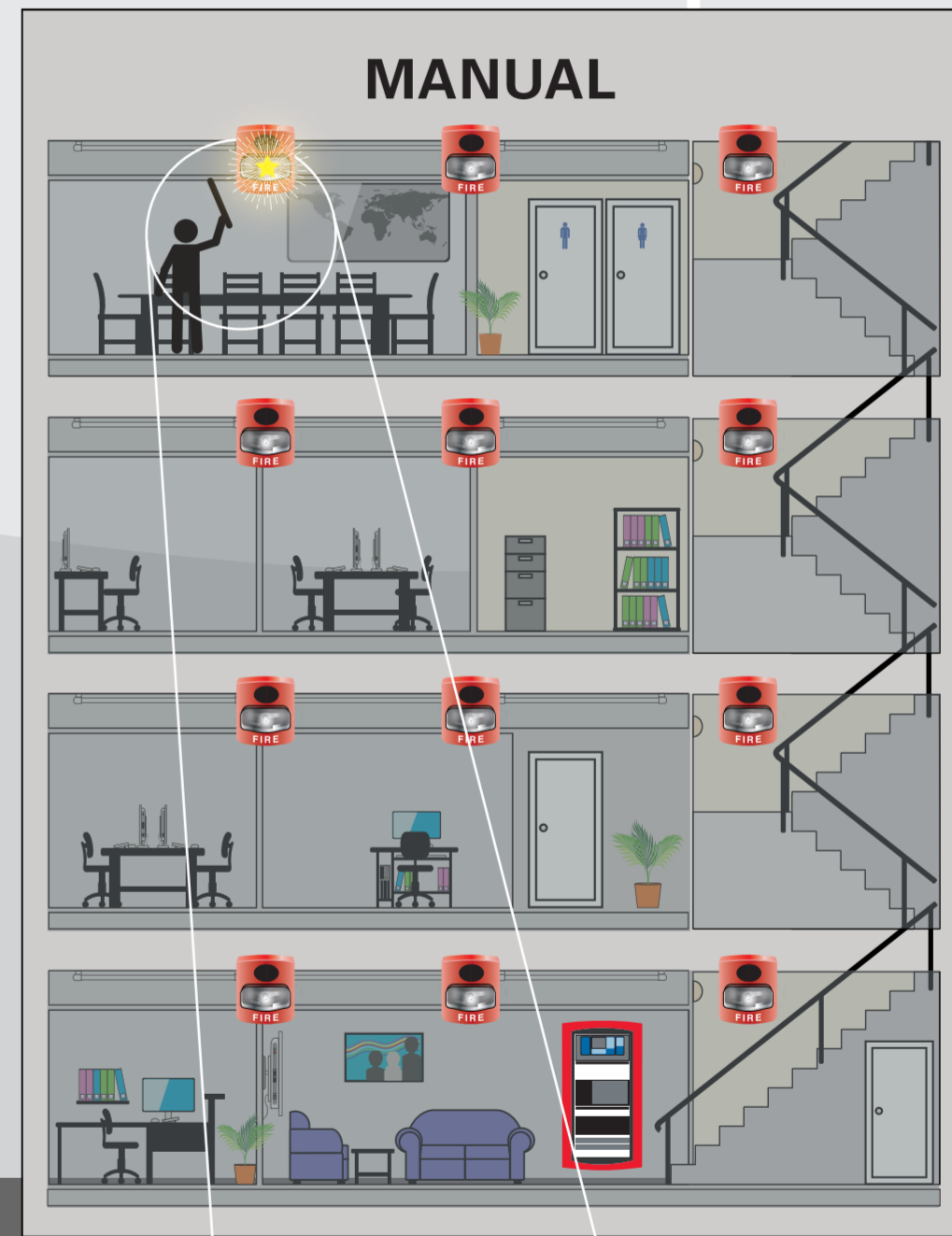
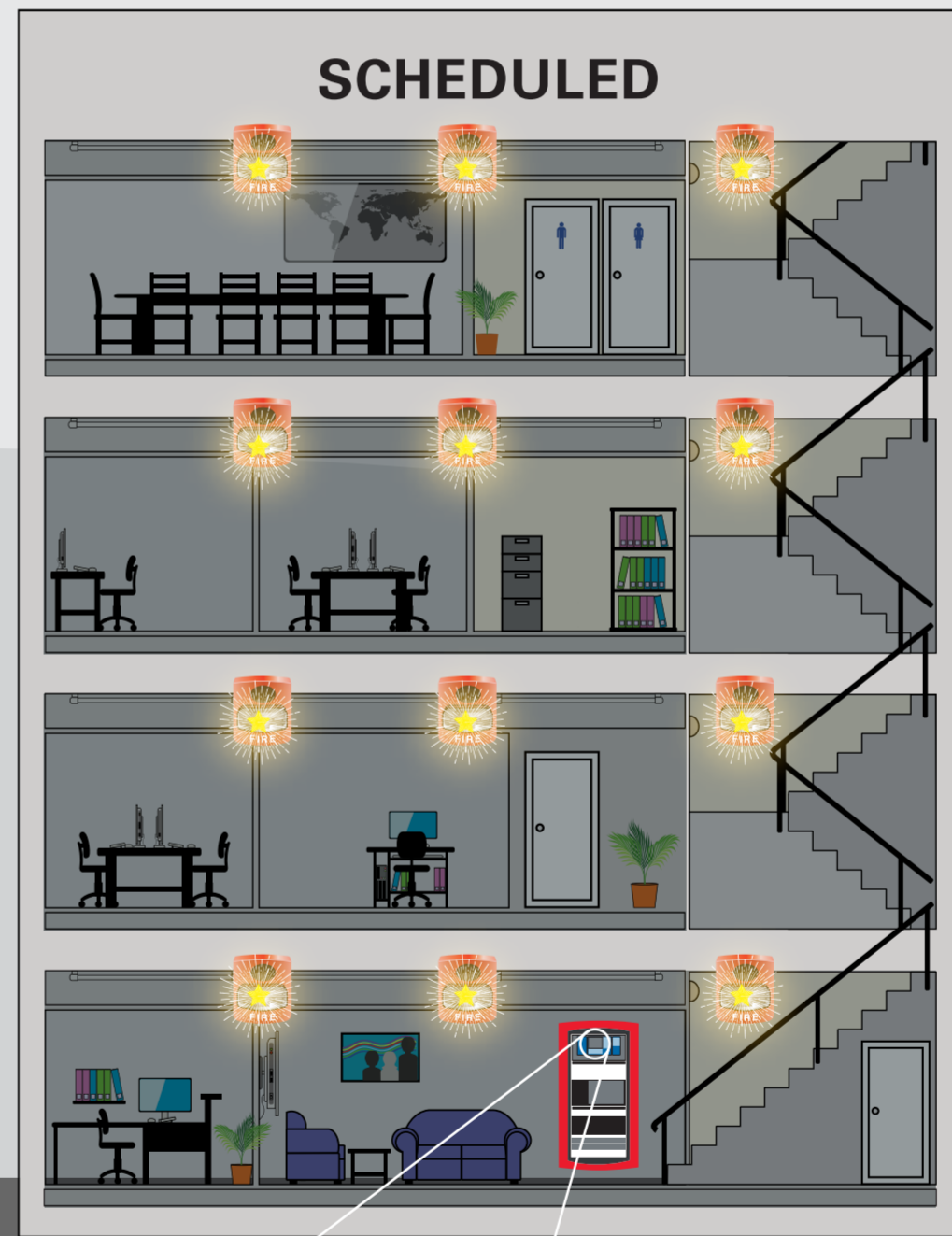
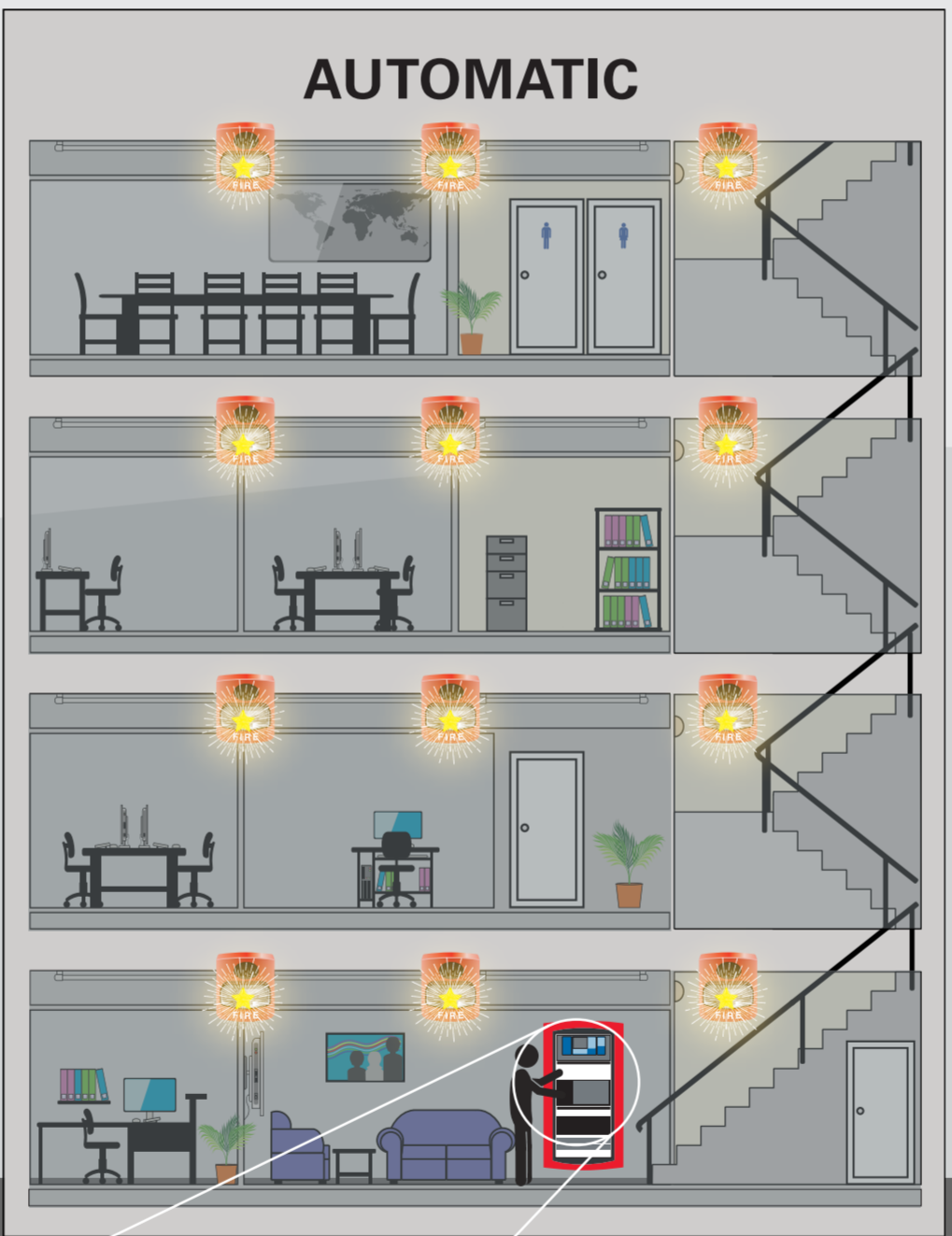


DOWNSIDE:

- Appliances not individually addressed or supervised
- Daytime testing: inconvenient and disruptive
- After-hours testing: costly and labor intensive
- Manual report generation is laborious and potentially inaccurate

All appliances on a circuit must remain on until each has been manually inspected.

ADDRESSABLE TESTING

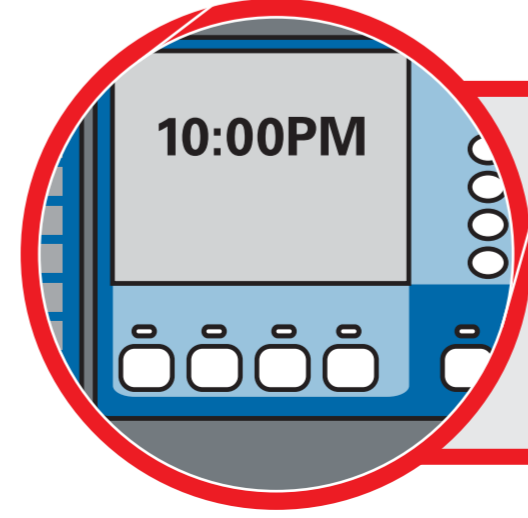


UPSIDE:

- Test all your notification appliances in seconds
- Test when and how it's most convenient
- Reduce disruption and eliminate costly after-hours testing
- Print accurate test reports from the panel



1. Automatic
Program the fire panel to automatically test a group of appliances or the entire system. Each device will beep and/or flash, and the panel will inform you of the results.



2. Scheduled
Set the fire panel to automatically test at a pre-programmed time. Make sure your system is in working order while you sleep!



3. Manual
Switch the system into manual test mode and check one device at a time with the handheld magnet. One technician, one appliance at a time—and no disruption.